

How to arrange an optimal deployment of SAP products in a system landscape

Dirk Anthony, SAP SE

Public



Legal Disclaimer

The information in this presentation is confidential and proprietary to SAP and may not be disclosed without the permission of SAP. This presentation is not subject to your license agreement or any other service or subscription agreement with SAP. SAP has no obligation to pursue any course of business outlined in this document or any related presentation, or to develop or release any functionality mentioned therein. This document, or any related presentation and SAP's strategy and possible future developments, products and or platforms directions and functionality are all subject to change and may be changed by SAP at any time for any reason without notice. The information in this document is not a commitment, promise or legal obligation to deliver any material, code or functionality. This document is provided without a warranty of any kind, either express or implied, including but not limited to, the implied warranties of merchantability, fitness for a particular purpose, or non-infringement. This document is for informational purposes and may not be incorporated into a contract. SAP assumes no responsibility for errors or omissions in this document, except if such damages were caused by SAP's willful misconduct or gross negligence. All forward-looking statements are subject to various risks and uncertainties that could cause actual results to differ materially from expectations. Readers are cautioned not to place undue reliance on these forward-looking statements, which speak only as of their dates, and they should not be relied upon in making purchasing decisions

Your Presenter for Today



Dirk Anthony

IT Landscape Architect

CoE Enterprise Architecture, SAP Product & Innovations

Agenda

Flashback

Landscape Architecture & Product Deployments

Consumption of Information in SAP Enterprise Architecture Explorer

Summary

Agenda

Flashback

Landscape Architecture & Product Deployments

Consumption of Information in SAP Enterprise Architecture Explorer

Summary

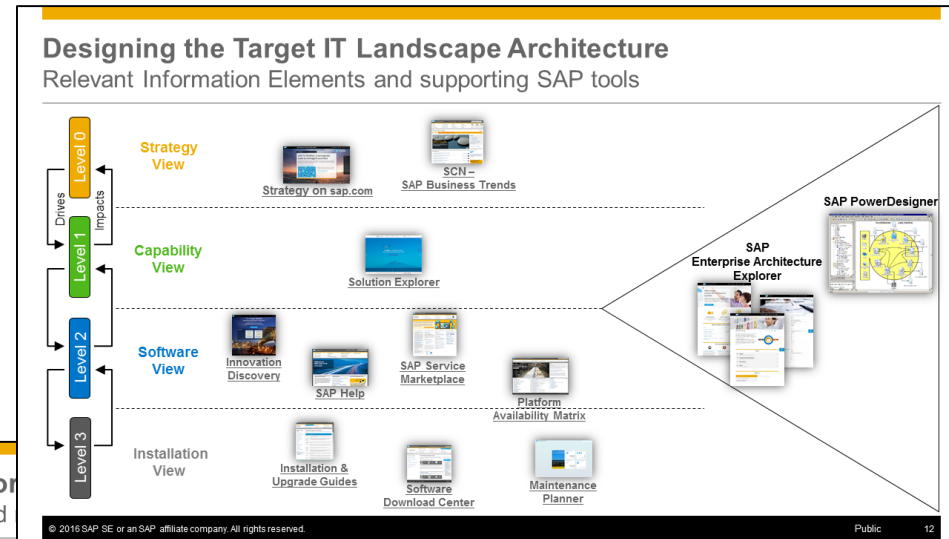
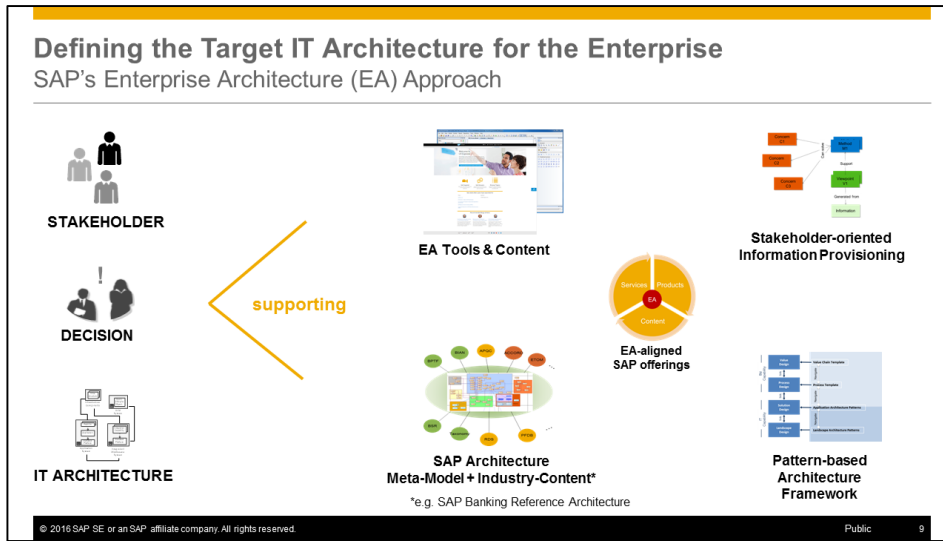
Overview of planned webinars

http://events.sap.com/de/sap-user-groups-knowledge-transfer/en/sap_user_experience_explorer

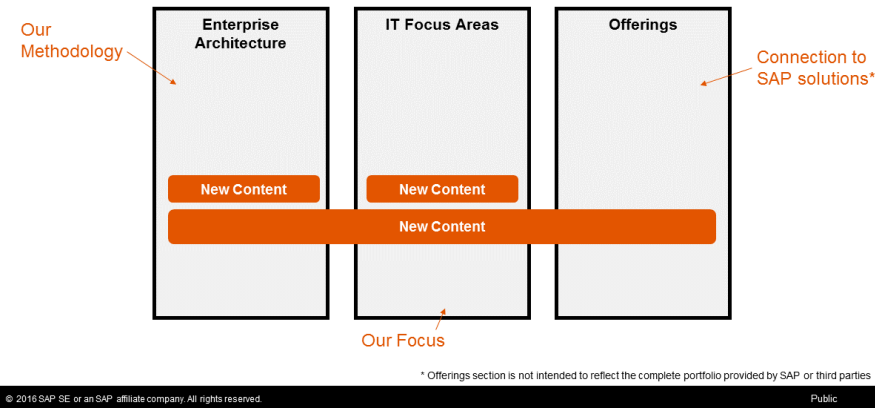
Title	Abstract	Date
The Evolution from SAP UX Explorer to SAP Enterprise Architecture Explorer	SAP Enterprise Architecture Explorer is a self-service provided by SAP that provides answers to many of your enterprise-related questions. It provides a well-structured and easy way to get to know your options and their relations to the necessary focus areas such as User Experience, Landscape Architecture, offerings such as SAP products and services as well as Enterprise Architecture. In this session you will learn in more detail what this Explorer is, which benefits it provides and how you can use it to quickly increase your know-how about relevant technologies, strategies and methods.	DONE
User Experience and Landscape Architecture in the light of Enterprise Architecture	If you are an enterprise architect you are typically searching for information that covers both, the business and IT perspective. In addition, you might like to see IT not only as a set of boxes and software. Instead you might want to get the topic structured and related to IT capabilities. SAP helps you in this matter with a structured approach to provide architecture viewpoints, transition paths and other elements on various burning topics. In this session, we want to introduce this approach and share the current state of this effort. This session will include real-life examples focused on User Experience (UX) and Landscape Architecture.	DONE
How to start developing an enterprise UX strategy	You might already know the SAP UX Strategy which provides a lot of important information. However, one question might still be in your mind: "How can I start now with my enterprise UX Strategy". In fact if you seriously want to improve user experience in your enterprise, you will need your own strategy that considers the business and IT goals of your company. Besides the strategy, you will need a roadmap and of course a process that combines all that in a consistent approach. This session provides insight in how to define your strategy, shows a tested process and provides several viewpoints on this matter.	DONE
How to arrange an optimal deployment of SAP products in a system landscape	Before implementing a new SAP product, IT departments need to decide how best to deploy this product within their system landscape. Information about the deployment architecture of the product needs to be analyzed. Useful deployment options have to be evaluated. Finally the planned landscape architecture for the new product needs to be determined and the new product has to be implemented and integrated into the existing system landscape. In this session you will learn more about how SAP can help you to identify the optimal deployment of its products in your system landscape.	TODAY
How to use SAP PowerDesigner to model your landscape architecture	SAP PowerDesigner is known as a business process and data modelling software for Enterprise Architecture (EA). It helps you to build a blueprint of your current and planned enterprise architecture in its entirety to understand its many interdependencies. Though, SAP PowerDesigner is often used to do process- and data modeling, you can also make use of it to model your reference landscape architecture. In this session we are going to perform a live demo of how to use SAP PowerDesigner to model such an architecture based on given business and IT priorities.	May 3

Flashback Webinar 1+2

What we have talked about in the first two webinars



The Core
New and



Webinar 1 + 2

SAP Enterprise Architecture Explorer & Content

Agenda

Flashback

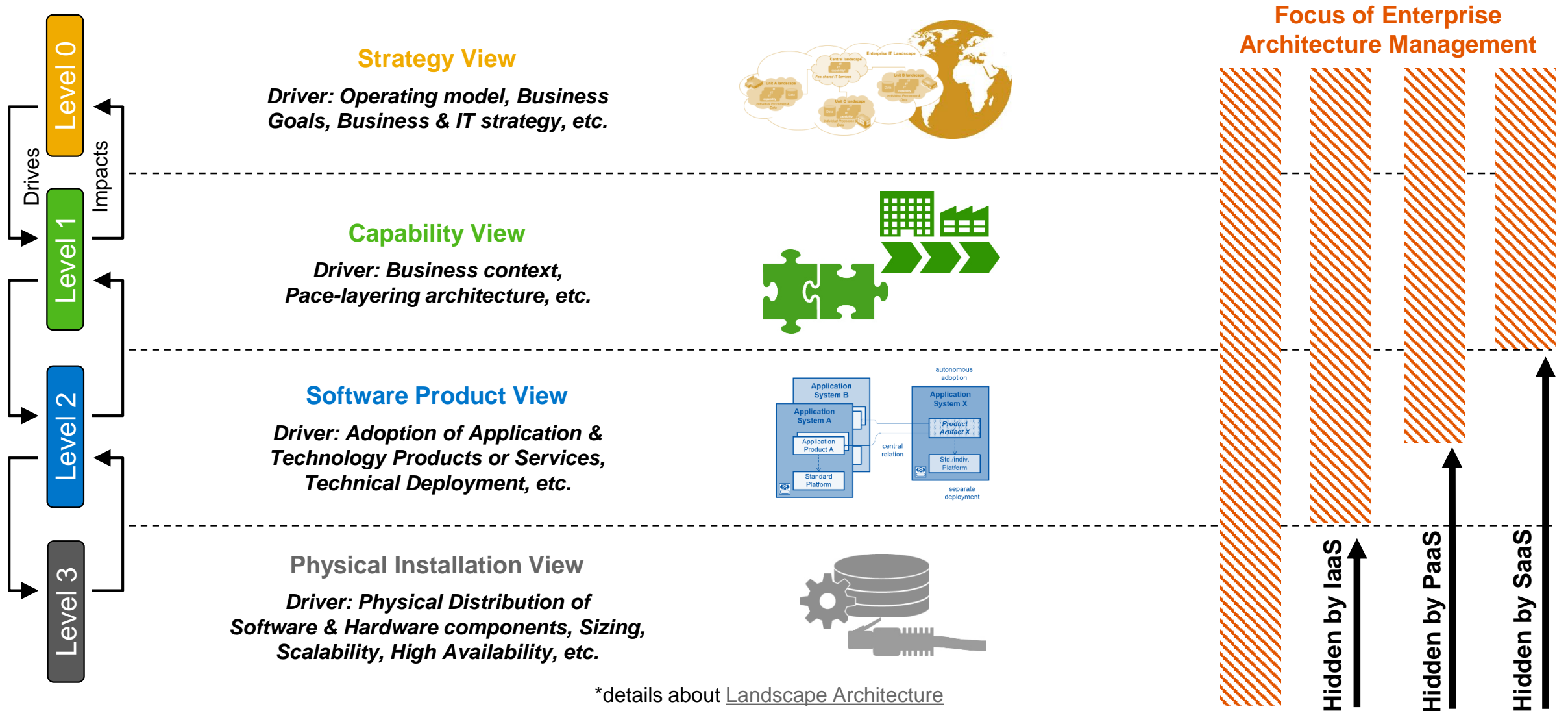
Landscape Architecture & Product Deployments

Consumption of Information in SAP Enterprise Architecture Explorer

Summary

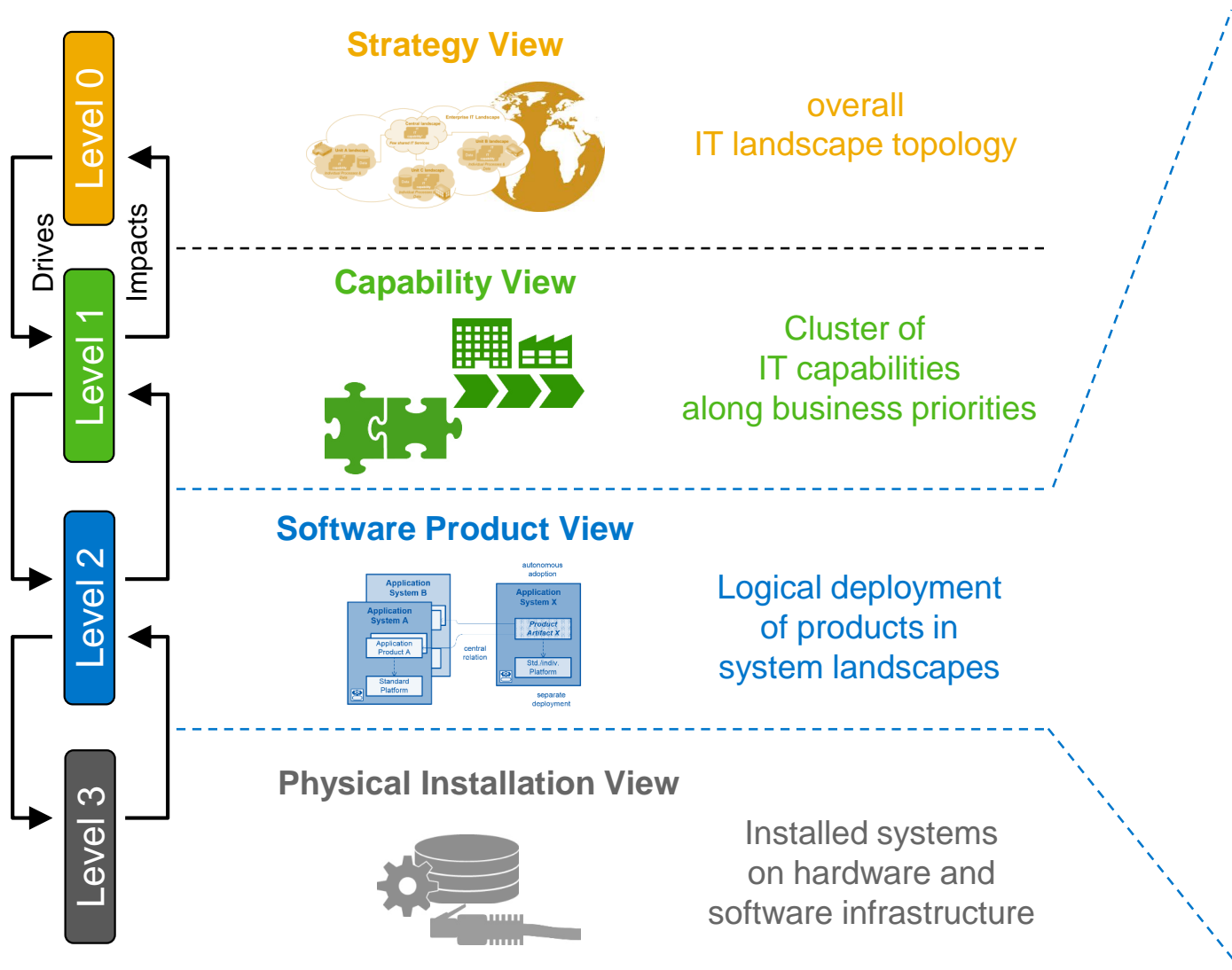
Customer Landscape Architecture

Different relevant Architecture Viewpoints on IT Landscapes*



Customer Landscape Architecture

Landscape Deployment of Software Products



Relevant deployment decisions

- Technical adoption of product features (autonomous vs. incorporated deployment)
- Technical relation of the product within the landscape (local vs. central deployment)
- Technical deployment of the product on a platform (separate vs. co-deployment)

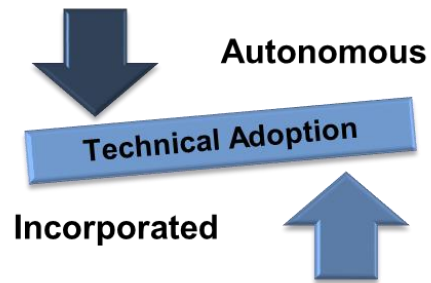
Influencing conditions

- Deployment architecture of the product
- Feasible landscape options for the product
- Optimization criteria
- Customer specific conditions

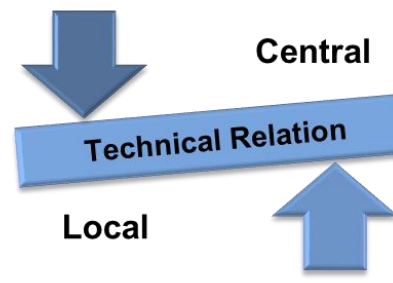
Deployment Decisions in System Landscapes

Describe Landscape Options via Architecture Pattern

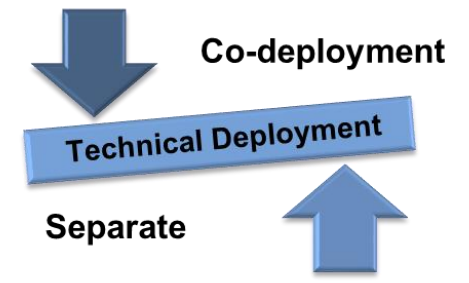
Reflecting important landscape characteristics along the deployment decisions



- ❖ functional role
- ❖ innovation cycle
- ❖ software delivery



- ❖ landscape cardinality
- ❖ version management



- ❖ system layout
- ❖ software management

Describing landscape behaviors and typical advantages & drawbacks of different landscape options with the help of System Landscape Patterns*

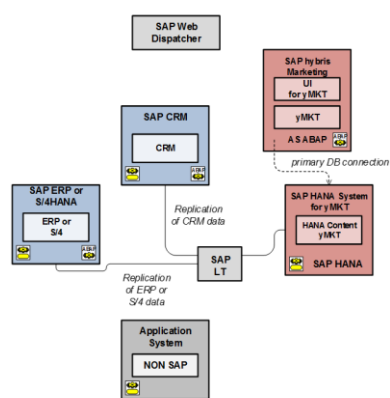
* [Details about System Landscape Pattern](#)

Landscape Deployment of SAP Products

Covering

- Information about the deployment architecture of a specific SAP product
- List of main building blocks that need to be deployed within a system landscape
- Links to further information that is relevant in this context
- Catalog of feasible landscape deployment options based on System Landscape Patterns
- Description of typical benefits and considerations of each landscape deployment option

Example: Deployment Architecture of SAP hybris Marketing



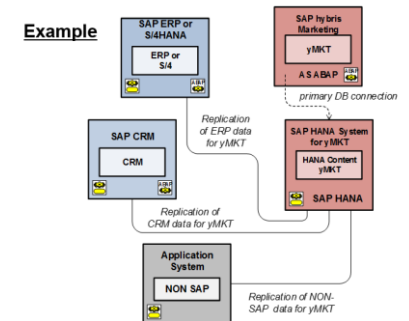
Deployment Architecture:

The deployment architecture of SAP hybris Marketing is based on the following main technical components:

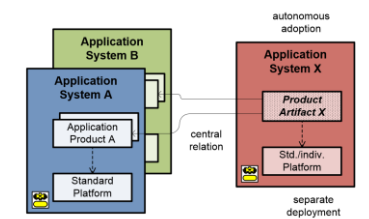
- SAP UI5-based User Interfaces (UIs) for SAP hybris Marketing
- An application system based on SAP NetWeaver AS ABAP
- The SAP hybris Marketing (yMKT) Add-On that is installed in this system
- A SAP HANA system that serves as database for the application data and that contains dedicated application content (Tables, views, procedures, search models)

Depending on the aimed business scenario, additional application systems might be required that need to be integrated. In order to access the business data of these application systems within the SAP HANA system of SAP hybris Marketing, a replicator might be required as well:

- SAP LT serves as replicator for SAP ERP or SAP CRM
- SAP Data Services serves as replicator for NON-SAP application system
- Web Services serve as replicator for SAP Cloud system



Deployment Option 1 of SAP hybris Marketing



System Landscape Pattern: Single-Product Hub Deployment

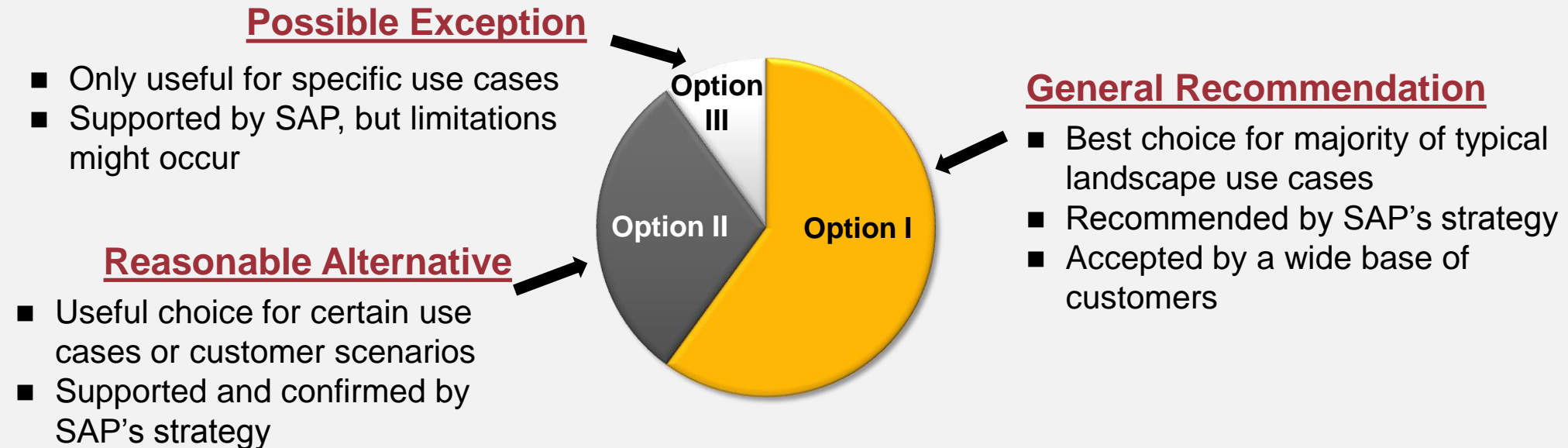
Benefits	Technical Aspects
<ul style="list-style-type: none"> High reusability of the technical solution for the landscape deployment option Full utilization of SAP Hybris Marketing (yMKT) architecture or separate deployment Customization possibility for new SAP Hybris Marketing features 	<ul style="list-style-type: none"> High advantages of the technical solution for the landscape deployment option Replication of SAP ERP or S/4HANA and SAP CRM business data to SAP Hybris Marketing via central usage provision
Considerations	Technical Aspects
<ul style="list-style-type: none"> High reusability of the technical solution for the landscape deployment option High reusability of the technical solution for the landscape deployment option Full utilization of SAP Hybris Marketing (yMKT) architecture or separate deployment Customization possibility for new SAP Hybris Marketing features 	<ul style="list-style-type: none"> High advantages of the technical solution for the landscape deployment option Replication of SAP ERP or S/4HANA and SAP CRM business data to SAP Hybris Marketing via central usage provision

Pros & Cons

Landscape Deployment Recommendations

Rating of different landscape deployment options for certain SAP products

Clear recommendations by categorization of deployment options

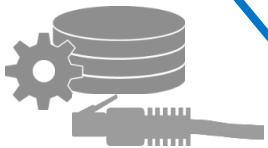
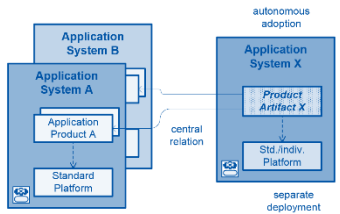
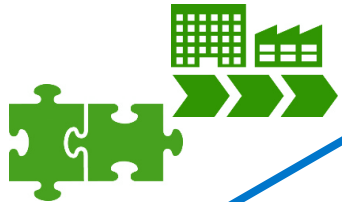


Disclaimer:

- Alternative deployment options typically have different pros & cons
- Customer individual assessment is **not** compensated

IT Landscape Architecture on Level 2 (Software Product View)

Supporting deliverables by SAP



SAP Enterprise Architecture Explorer



SAP Service Marketplace

SAP Help

Platform Availability Matrix

SAP Notes

Installation & Upgrade Guides

Topics in SAP EA Explorer:

Landscape Concern

SAP Products

Landscape Deployment Options

System Landscape Pattern

Landscape Deployment Recommendations

Agenda

Flashback

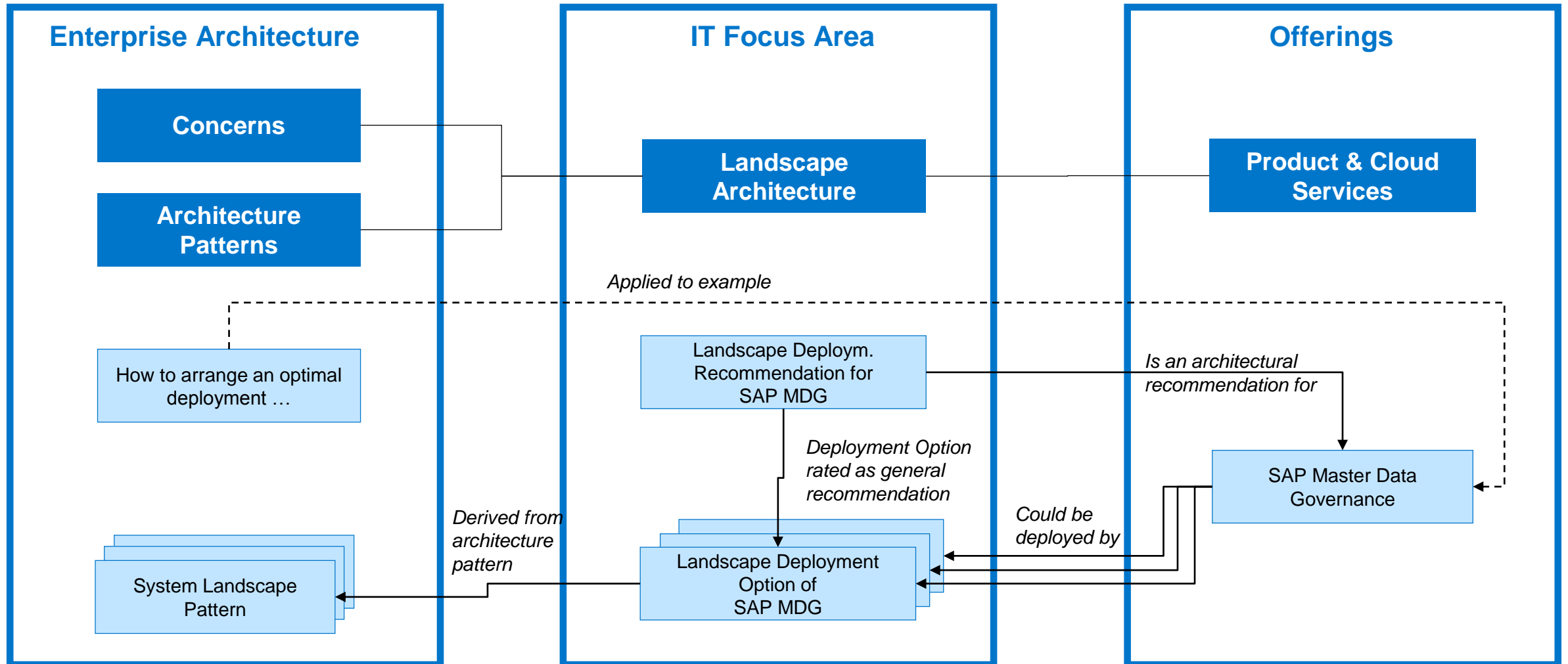
Landscape Architecture & Product Deployments

Consumption of Information in SAP Enterprise Architecture Explorer

Summary

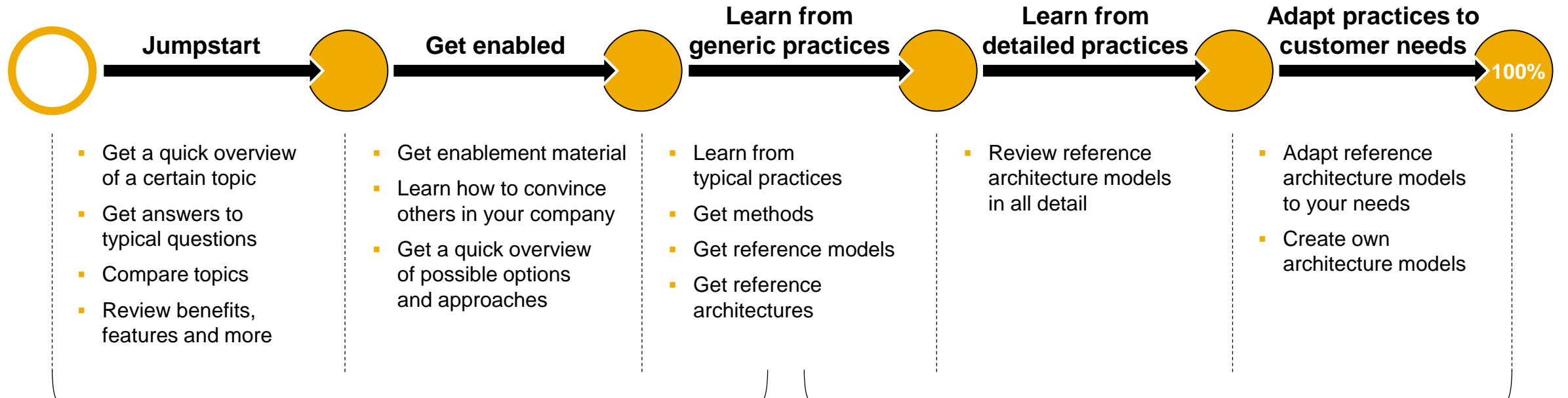
Landscape Deployment of SAP Master Data Governance

EA-based Guidance for Landscape Architecture on Level 2 (Product Software View)

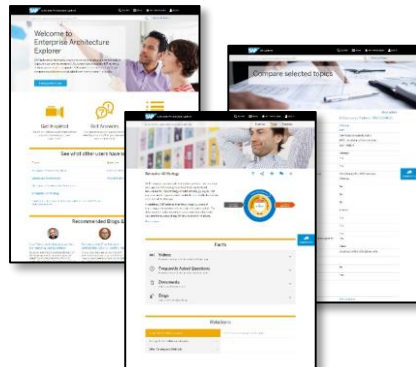


Help for Customers on different Information Grade

SAP Enterprise Architecture Explorer and SAP Power Designer

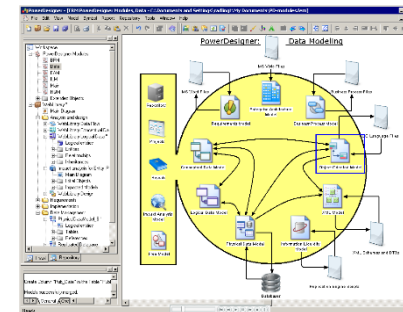


SAP Enterprise Architecture Explorer

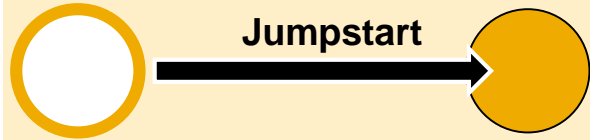


Specialized
SAP sources

SAP PowerDesigner



Help for Customers: Jumpstart SAP Enterprise Architecture Explorer



- Get a quick overview of a certain topic
- Get answers to typical questions
- Compare topics
- Review benefits, features and more

**Search for
-> Single Topic**

IT Focus Area

- Landscape Architecture
- Landscape Deploy. Recommendation for SAP MDG

IT Focus Areas / Landscape Architecture / Landscape Deployment Recommendations

Overview Facts Relations

Landscape Deployment Recommendations for SAP Master Data Governance

Before implementing **SAP Master Data Governance** (SAP MDG), customers have to decide how the main components of this product will be deployed in the system landscape. SAP MDG allows various deployment options, which result in different system landscape architectures. Each architecture has both advantages and drawbacks. It is therefore up to the customers to decide, which deployment option for SAP MDG best suits their IT and business needs.

SAP provides system landscape deployment recommendations for SAP MDG to support customers to make the right decisions. These **recommendations** are based on a defined methodology to ensure consistency across different products. A common template-based structure and layout simplifies the consumption of this information.

The recommendations cover a rating of the currently supported options for the **landscape deployment of SAP MDG** that also contains additional information about the deployment architecture and possible landscape scenarios.

Disclaimer:

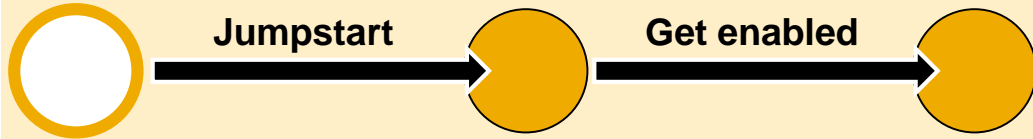
Please be aware that these recommendations are not substitute for an individual assessment. The specific customer environment cannot be considered by SAP on a generic base and needs to be always analyzed individually.

Facts

- » **Getting started**
To get started straight away, look no further
- Documents**
A list of useful documents
 - **Landscape Deployment Recommendations for SAP MDG 8.0** (updated 27.11.2015)
PDF document covering the Landscape Deployment Recommendations for SAP MDG 8.0

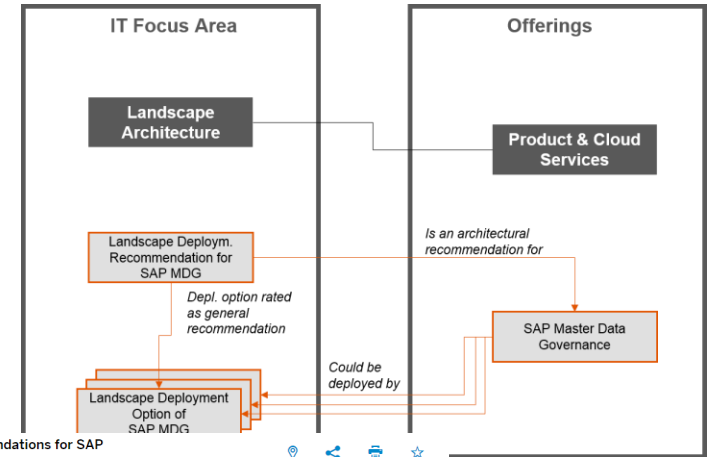
Help for Customers: Get Enabled

SAP Enterprise Architecture Explorer



- Get a quick overview of a certain topic
 - Get answers to typical questions
 - Compare topics
 - Review benefits, features and more
- Get enablement material
 - Learn how to convince others in your company
 - Get a quick overview of possible options and approaches

Explore
-> **Related Topics**



Landscape Deployment Recommendations for SAP Master Data Governance

Getting started
To get started straight away, look no further

Documents
A list of useful documents

Links
Search here for additional sources of information

Relations

- Deployment options rated as general recommendation > LS Scenario I - Opt
- Deployment options rated as reasonable alternative > LS Scenario II - Op
- Deployment options rated as possible exception > LS Scenario II - Op ERP)
- Deployment options rated as not supported >
- Is an architectural recommendation for >
- Belongs to the following category >
- Other Landscape Deployment Recommendations >

LS Scenario I - Option 1 (SAP MDG with local SAP ERP)

Product SAP Master Data Governance can be deployed in a system landscape as a *master data hub* based on SAP HANA. This deployment option is possible in a distributed system landscape with only local SAP ERP systems available (landscape scenario I).

The following major aspects characterize this deployment option:

- SAP Master Data Governance (MDG) is deployed as separate master data hub based on SAP HANA.
- The technically embedded product SAP ERP is not operationally used and serves as a technical runtime for SAP MDG only.
- SAP HANA is used as primary database for SAP MDG and for search, standardization and matching scenarios.

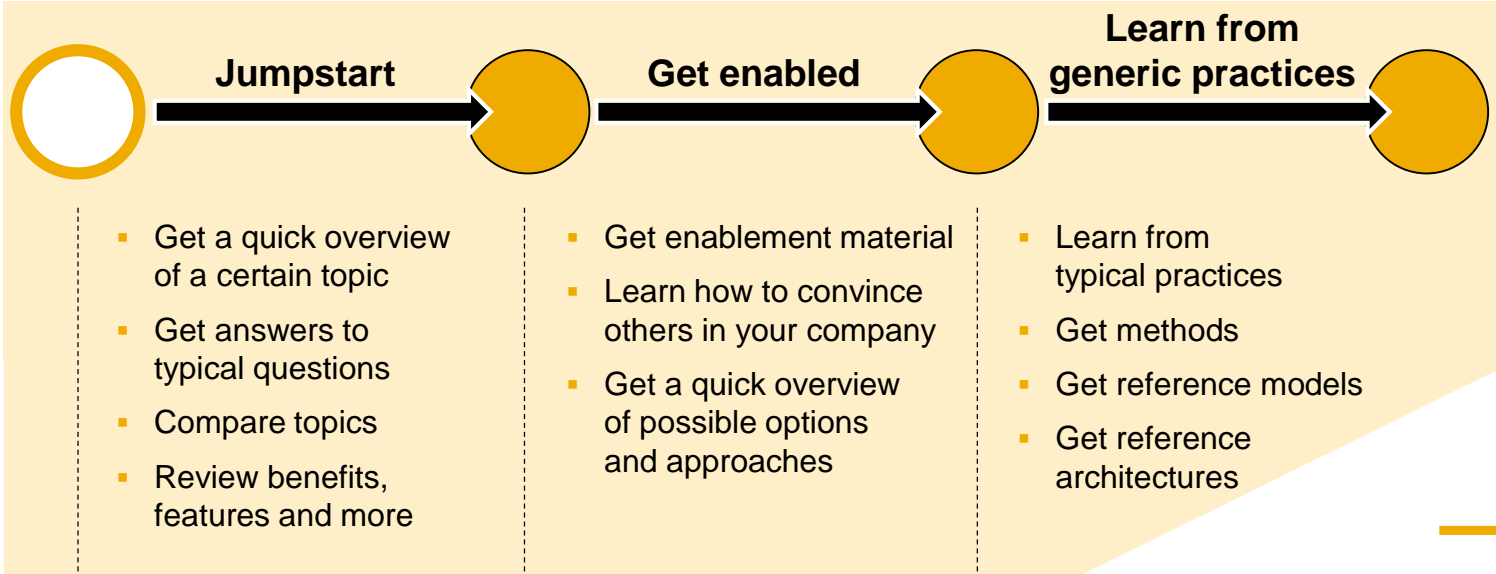
Example

Facts

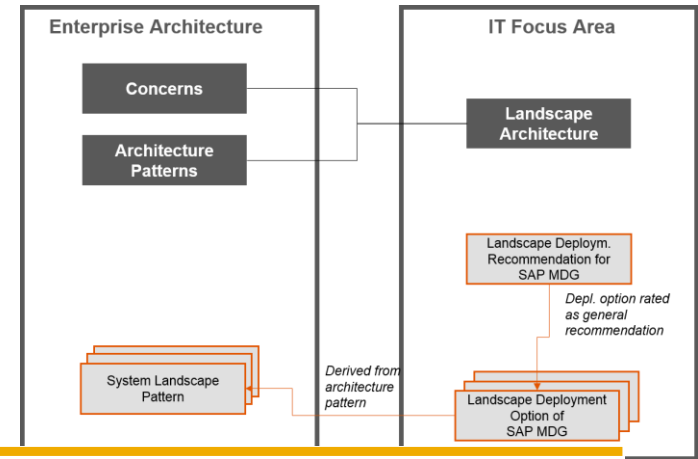
- Benefits**
Provides an overview of the benefits of this topic
- Considerations**
Provides an overview of facts to be considered for this topic
- Links**
Search here for additional sources of information

Help for Customers: Learn from Generic Practices

SAP Enterprise Architecture Explorer



**Navigate
-> thru EA topics**



Relations

Is derived from architecture pattern > Single-Product Hub Deployment (SLP)

Belongs to the following category: Enterprise Architecture (EA) / Architecture Patterns / System Landscape Patterns (SLPs) Overview Facts Relations

Rated as general recommendation: **Single-Product Hub Deployment (SLP)**

Other Landscape Deployment Governance (MDG)

The System Landscape Pattern - Single-Product Hub Deployment defines a deployment option for a software product in a system landscape based on the [System Landscape Pattern](#) approach. The expected product behavior for this landscape deployment is specified in order to make sure that it meets the requirements of this kind of landscape layout.

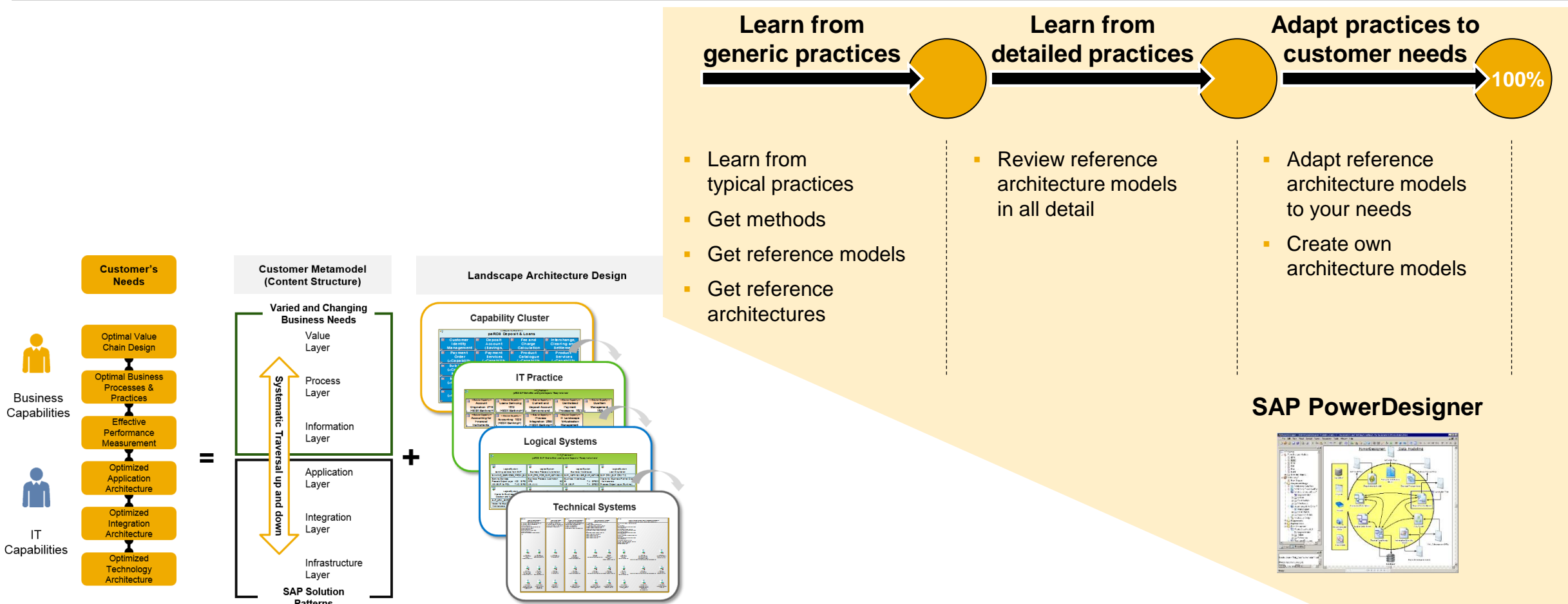
This system landscape deployment has the following objectives:

- An *autonomous* technical adoption of the software product with an independent product lifecycle,
- A *central* technical relation of the software product in the system landscape, and
- A *separate* technical deployment of the software product on an individual platform or system.

[Read more >](#)

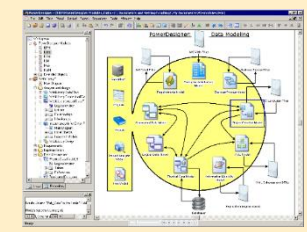
Help for Customers: Detailed Practices + Adapt Practices

SAP Power Designer



- Learn from generic practices**
 - Learn from typical practices
 - Get methods
 - Get reference models
 - Get reference architectures
- Learn from detailed practices**
 - Review reference architecture models in all detail
- Adapt practices to customer needs**
 - Adapt reference architecture models to your needs
 - Create own architecture models

SAP PowerDesigner



! Details: Webinar May, 3 2016
"How to use SAP PowerDesigner to model your landscape architecture"

DEMO

Agenda

Flashback

Landscape Architecture & Product Deployments

Consumption of Information in SAP Enterprise Architecture Explorer

Summary

Summary

Enterprise Architecture based methodologies help to identify the most suitable system landscape design.

SAP provides different deliverables to support customers

- System Landscape Patterns
- Landscape Deployment Options of SAP Products
- Landscape Deployment Recommendations

This information can be consumed for different levels in different steps

<http://sap.com/eaexplorer>

Thank You

Thank You!

Any questions?



Dirk Anthony

Mail: dirk.anthony@sap.com

Title	Date
The Evolution from SAP UX Explorer to SAP Enterprise Architecture Explorer	DONE
User Experience and Landscape Architecture in the light of Enterprise Architecture	DONE
How to start developing an enterprise UX strategy	DONE
How to arrange an optimal deployment of SAP products in a system landscape	DONE
How to use SAP PowerDesigner to model your landscape architecture	May 3